



FabGennix International, Inc.
9191 Kyser Way Bldg. 4 Suite 402
Frisco, TX 75033

Tel: (214)-387-8105, 1-800-786-1236

Fax: (214)-387-8105

Email: info@fabgennix.com

Web: www.FabGennix.com

Rabbit Polyclonal PDE11A antibody

Catalog Number: PD11A-112AP

Lot Number:

General Information

Product Description	PDE11A Antibody Affinity Purified Cyclic Nucleotide Phosphodiesterase 11A1 Antibody C-epitope
Accession #	Uniprot: Q9HCR9 GenBank: CAB82573.1
Verified Applications	CM, ELISA, ICC, IF, IHC, IP, WB
Species Cross Reactivity	Human, Mouse, Rat
Host	Rabbit
Immunogen	Synthetic peptide conjugated to KLH, corresponding to C terminal amino acids 454-468 of human PDE11A.
Specificity	This antibody does not cross-react with any of the members of the PDE family. This antibody is common to all PDE11A variants including PDE11A1-PDE11A4.
Alternative Nomenclature	cAMP and cGMP cyclic nucleotide, Cyclic nucleotide phosphodiesterase 11A1 antibody, Dual 3' 5' cyclic AMP and GMP, pde11a2 antibody, PPNAD2 antibody

Physical Properties

Quantity	100 µg
Volume	200 µl
Form	Affinity Purified Immunoglobulins
Determinant	C-epitope
Immunoglobulin & Concentration	0.69 mg/ml IgG in antibody stabilization buffer
Purification Method	Immobilized antigen affinity chromatography
Storage	Store at -20°C for long term storage.

Recommended Dilutions

DOT Blot	1:10,000
ELISA	1:10,000
Immunocytochemistry	1:250
Immunofluorescence	1:250
Immunohistochemistry	1:250
Immunoprecipitation	1:250
Western Blot	1:500

Tel: (214)-387-8105, 1-800-786-1236

Fax: (214)-387-8105

Email: info@fabgennix.com

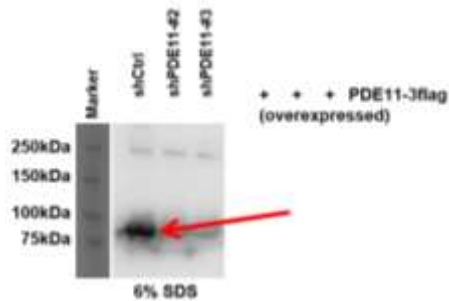
Web: www.FabGennix.com

Related Products

Catalog

BIOTIN-Conjugated	PD11A.112-BIOTIN
FITC-Conjugated	PD11A.112-FITC
Antigenic Blocking Peptide	P-PD11A.112
Western Blot Positive Control	PC-PD11A
PDE11A Antibody N-epitope	PD11A-101AP
Phospho-PDE11A Antibody (S117)	PD11A-140AP
Phospho-PDE11A Antibody (S117 & S124)	PD11A-150AP
PDE11A3 Antibody	PD11A3-121AP
PDE11A4 Antibody	PD11A4-131AP

Application Verification:



WB of PDE11A antibody (PD11A-112AP) with overexpressed 293T cells. 293T 10 cm PEI transfection: PDE11 5µg overexpress +shRNA 15 µg. 1:500 primary antibody dilution in 5% milk for 2 hours and 30 minutes. Image courtesy of Youn Jung, Keck School of Medicine, University of Southern California.

Dilutions are for reference only. Applications not listed above are not necessarily precluded from working with this antibody. Investigators intending to use an application that has not been verified can request a complimentary sample.

Overview:

Cyclic nucleotides are important intracellular second messengers which play pivotal role in variety of signal transduction process. The cyclic nucleotides are compartmentalized and hydrolyzed by the action of cAMP or cGMP phosphodiesterases 1-12 (PDE1-12) that hydrolyze them in to non-cyclic nucleotides. Among the cGMP-dependent PDEs, the PDE5 and PDE11 exhibit similar structure and share 50% homology in their catalytic domain. The PDE11A has an N-terminus GAF domain homologous to other signaling molecule as found in PDE2, PDE5, PDE6, PDE10 this potentially represent an allosteric cGMP and other small signaling molecules. The PDE11A is sensitive to non-selective PDE inhibitor IBMX as well as zaprinast and dipyridamole, inhibitors that are generally selective for cGMP-specific enzymes. PDE11A expression is diverse and is found in high levels in brain tissue, prostate, kidney, liver, pituitary and testis. At least four variants of PDE11A have been identified (PDE11A1, A2, A3 and A4) based on the three transcripts identified in various tissues ranging in size from 10.5 kb, 8.5 and 6.0 kb. Western blotting with PDE11A antibody labels at least four PDE11A variants 120 kDa, 79 kDa, 65 kDa and a 57 kDa.

The PDE11A-selective antibodies were generated against a synthetic peptide taken within amino acid region 454-468 on human PDE11A protein. The PDE11A synthetic peptide was covalently modified to achieve desired antigenic properties and was conjugated to a carrier protein before used as immunogen to raise antibodies in rabbits. The PDE11A antibodies are affinity purified over immobilized immunogenic peptide affinity matrix and stabilized with preservatives for long-term storage. Antigenic blocking peptide (P-PD11A.112) and western blot positive controls (PC-PD11A) are available. Antibodies can be conjugated to fluorophores or secondary enzymes upon request at nominal cost. For a complete listing of all FabGennix antibodies and lab services, please visit <http://fabgennix.com>.

* For users who may require large amounts of the products listed above, please inquire about bulk material discounts.

This Product is for Research Use Only and is NOT intended for use in humans or clinical diagnosis.