

Rabbit Polyclonal Anti-ZDHHC9 antibody

Catalog Number: ZDHHC9-901AP

Lot Number:

General Information

Product	ZDHHC9 Antibody
Description	Affinity Purified Palmitoyltransferase antibody
Accession #	Uniprot: Q9Y397
Verified Applications	ELISA, IP, WB
Species Cross Reactivity	Human, Mouse, Rat
Host	Rabbit
Immunogen	Synthetic peptide taken within amino acid region 250-300 on human Palmitoyltransferase ZDHHC9 protein.
Alternative Nomenclature	Antigen MMSA 1 antibody, Asp His His Cys domain containing protein 9 antibody, CGI89 antibody, CXorf11 antibody, DHHC9 antibody, MMSA1 antibody, MRXSZ antibody, Palmitoyltransferase ZDHHC9 antibody, ZDHHC 9 antibody, Zinc finger DHHC type containing 9 antibody, Zinc finger protein 379 antibody, Zinc finger protein 380 antibody, ZNF379 antibody, ZNF380 antibody

Physical Properties

Quantity	100 µg
Volume	200 µl
Form	Affinity Purified Immunoglobulins
Immunoglobulin & Concentration	0.55-0.75 mg/ml IgG in antibody stabilization buffer
Storage	Store at -20°C for long term storage.

Recommended Dilutions

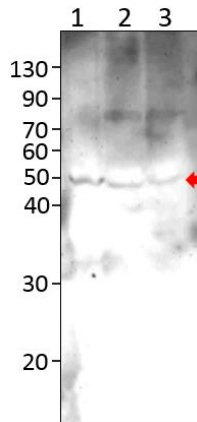
DOT Blot	1:10,000
ELISA	1:10,000
Immunoprecipitation	1:200
Western Blot	1:500

Related Products

FITC-Conjugated	ZDHHC9-FITC
BIOTIN-Conjugated	ZDHHC9-BIOTIN
Blocking Peptide	P-ZDHHC9
Positive Control	PC-ZDHHC9

Catalog

Application Verification:



WB of ZDHHC9 (ZDHHC9-101AP) antibody
Rat skeletal muscle
Rat cortex
Rat spinal cord

Antibody dilution 1:500 in DiluOBuffer.
Apparent MW of zDHHC9 is 48kDa. Blot was obtained at higher antibody concentrations to detect appearance of non-specific bands.

Dilutions are for reference only. Applications not listed above are not necessarily precluded from working with this antibody. Investigators intending to use an application that has not been verified can request a complimentary sample.

Overview:

Palmitoyltransferase ZDHHC9, a member of the ERF2/ZDHHC9 subfamily, is an enzyme that is encoded by the ZDHHC9 gene in humans (1). The ZDHHC9-GOLGA7 complex is a palmitoyltransferase specific for HRAS and NRAS (2). ZDHHC9 is involved in protein palmitoylation and peptidyl-L-cysteine S-palmitoylation. ZDHHC9 is a multi-pass membrane protein that is localized in the Endoplasmic reticulum membrane and Golgi apparatus membrane (2). ZDHHC9 is highly expressed in kidney, skeletal muscle, brain, lung and liver, while absent in thymus, spleen and leukocytes. ZDHHC9 contains 1 DHHC-type zinc finger; the DHHC domain is required for palmitoyltransferase activity.

ZDHHC9 selective antibodies were generated against a synthetic peptide corresponding to a sequence within the C-terminus amino acid region 250-300 on human ZDHHC9 protein. The purified immunoglobulins are stabilized in antibody stabilization buffer. Antigenic blocking peptide (P-ZDHHC9) and western blot positive controls (PC-ZDHHC9) are available. Antibodies can be conjugated to fluorophores or secondary enzymes upon request at nominal cost.

References:

1. Lai, Chun-Hung, et al. "Identification of novel human genes evolutionarily conserved in *Caenorhabditis elegans* by comparative proteomics." *Genome research* 10.5 (2000): 703-713.
2. Swarthout, John T., et al. "DHHC9 and GCP16 constitute a human protein fatty acyltransferase with specificity for H- and N-Ras." *Journal of Biological Chemistry* 280.35 (2005): 31141-31148.

* For users who may require large amounts of the products listed above, please inquire about bulk material discounts.
This Product is for Research Use Only and is NOT intended for use in humans or clinical diagnosis.